



BHMTM

***Engineering the global with
hi-tech and precision . . .***

BHM CORPORATION[®]

41, LIC Colony, R.S. Puram
Coimbatore - 641 002, INDIA

Tel : + 91 422 4366 956 / 4366 976

Fax : + 91 422 4370 976

e-mail : info@bhm.co.in

About Us

In a dynamic world that is driven by technology, a powerful presence depends on the way you mould technology to fit popular needs. Indigenous talent, a daring attitude, courage to accept to learn new things ... And the simple spark of an idea.

BHM CORPORATION a success story in the International scenario, specialises in the manufacture of a wide range and line-up of Industrial equipments and products. Our concern is a leading supplier in International Industrial Units.

BHM CORPORATION places a premium on original technology and innovation backed by team of young, dedicated technical, research and development personnel.

In a short span of time, Our Concern has taken on some of the giants in the industry and emerged with winning colors. With more and more technical expertise and infrastructural support, Our Concern scales higher peaks.

When you are gripped by an idea, it heralds the birth of a new action, a new beginning, and a better and positive way of looking at things. Ideas are the basis of growth. And ideas are something Our Concern nurtures in plenty.

Our Concern understands that there are no limits to the power of our imagination, to the lengths that our ingenuity and creativity can take us in the Corporate World.

Today, BHM CORPORATION stands tall as a doyen and has expanded its empire to embrace many more diverse business operations.

Isolators - Anti Vibration Mount



Model/Code	Applied Load N	Deflection mm
BV 002	2000	15

Isolators



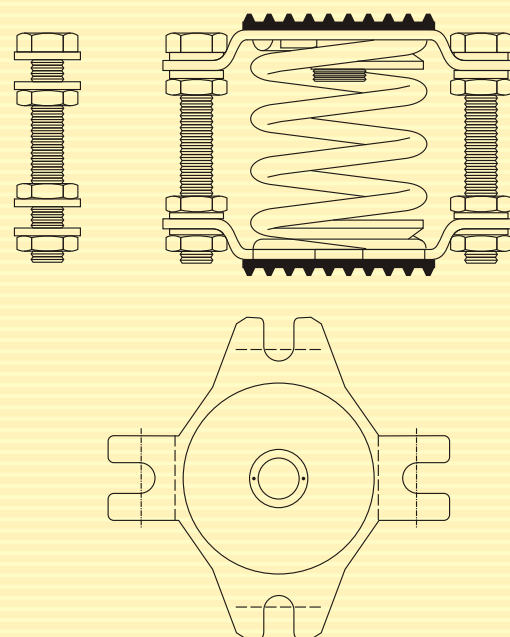
Spring made of steel EN45 with surface protected by cathophoretic treatment. The spring is locked to the plates with disk and sleeves.

2 Steel plates 4mm thick with holes. 2pairs of holes for the insertion of braces for the 'spring locking' a pair of holes for the anchorage to the supporting structure. (the locking system is used to prevent the suspended machine from swinging when moved)

Hollow bushing M8 on the upper plate.

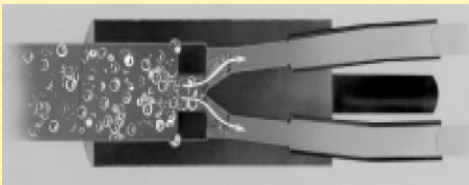
2 braces with toothed nuts and washers in zinc-plated steel

2 antioil elastomer gaskets applied on the two bearings damp sound vibrations.



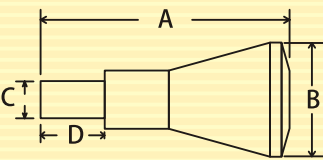
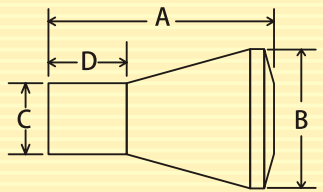
Model/Code	K Kg/mm	Max Static Load Kg	Max Deflection mm	h mm
KBD 02	0, 5	21	42	106
KBD 04	1, 0	39	39	
KBD 05	1, 6	63	39	
KBD 06	2, 1	79	38	
KBD 08	2, 8	104	37	
KBD 09	3, 9	142	36	
KBD 12	5, 0	182	36	
KBE 14	6, 3	227	36	
KBE 20	7, 5	247	33	
KBE 22	9, 6	324	33	
KBE 30	11, 8	380	32	
KBE 300	13, 4	392	29	
KBE 301	15, 0	427	28	
KBE 305	16, 5	458	28	

Material : BRASS

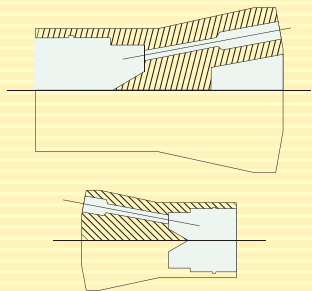


Velocity of refrigerant LIQUID - VAPOR MIXTURE increased by flow through nozzle orifice
Orifice provides homogeneous MIXING through turbulence created by pressure drop
Refrigerant MIXTURE divided by conical button while still a high velocity MIXTURE fed
equally to circuits

- Reliable machining quality.
- Capacities and Sizes for most applications.
- Easy to solder. Steel models feature trepanned circuits for simplified welding.
- Interchangeable nozzle permits custom selection.
- Can be installed in any position.
- Adapts to, and compliments, quality expansion valves.
- Can be applied to any make multi-circuit evaporator coil.
- Allows visual inspection of solder joints.
- Permits use of a probe wire or air jet to test for plugged circuits at distributor or evaporator coil.

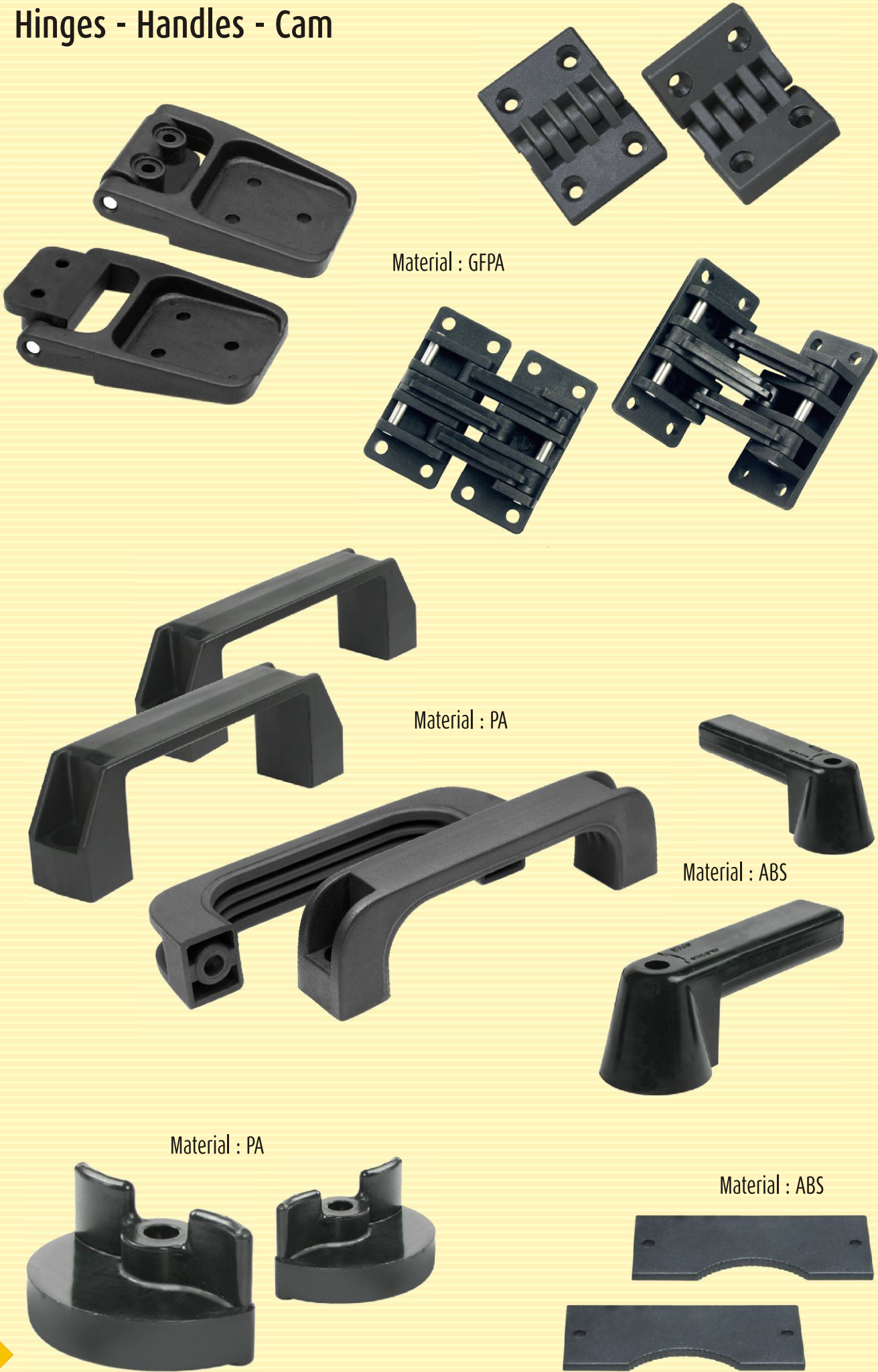


No. Circuits & Tubing Sizes	Nozzle Orifice Numbers	Nozzle & Retainer Ring Size	Inlet Connection Inches	Dimension			
				A	B	C	D
BD 001 8 to 12 - 3/16" 7 to 8 - 1/4" 5 to 6 - 5/16" 3 to 4 - 3/8"	1/6 thru 20	G	7/8 ODM Solder	1.78	1.16	.873 .875	0.88
BD 002 16 to 20 - 3/16" 11 to 15 - 1/4"	2 thru 30	E	1-1/8 ODM Solder	2.44	1.75	1.123 1.125	1.12



Specifications as per customers requirement

Hinges - Handles - Cam



Material : GFPA

Material : PA

Material : ABS

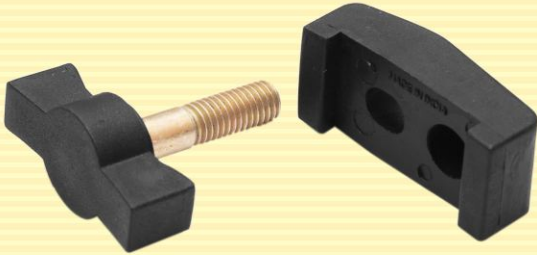
Material : PA

Material : ABS

Latch - Knobs - Differential Port - Gear Wheel - Bush - End Caps



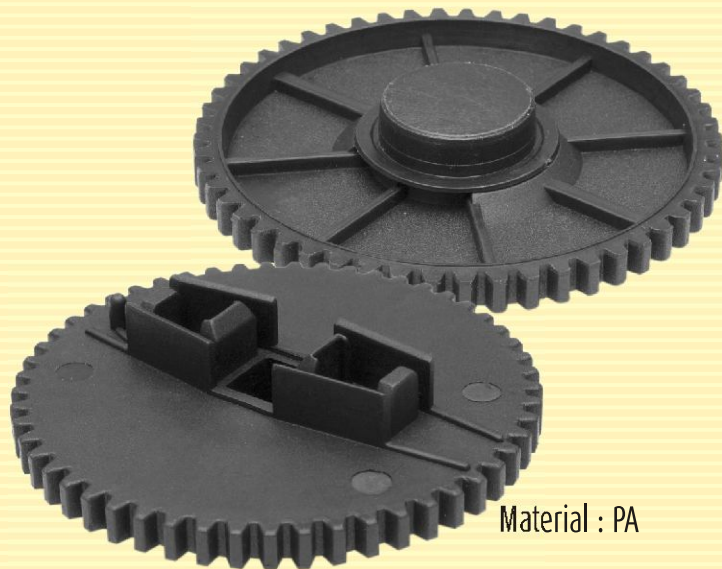
Material : GFPA



Material : PA



Material : PA



Material : PA



Material : BAKELITE

Material : LDPE



Panel Bush - Saddle - Hostoform Bush - Gaskets

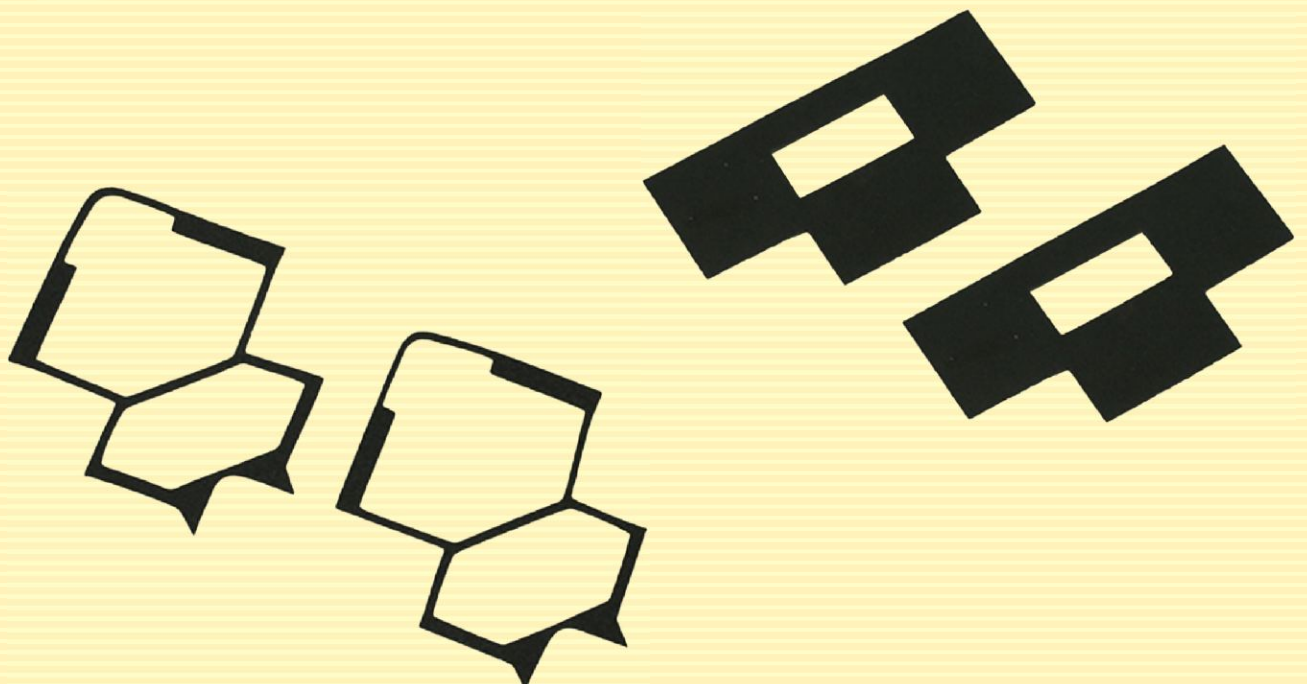
Material : PA



Material : Al



Material : ABS

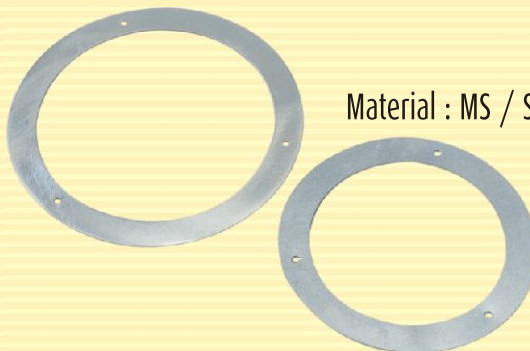


Rubber Flanges - Al / Steel Gaskets - Rubber Glands - Plugs



Material : NBR / STEEL

Sizes : 5/8, 7/8, 1 1/8, 1 3/8, 1 5/8, 2 5/8, 3 5/8, 2 1/8, 3 1/8 & 4 1/8



Material : MS / SS



Material : NBR / Al



SL. No	A	B	C	D	E
1	Ø 93.0	Ø 32.0	Ø 43.5	3	27.6
2	Ø 100.0	Ø 38.3	Ø 50.5	3	27.6
3	Ø 113.0	Ø 50.5	Ø 62.0	3	27.6
4	Ø 125.5	Ø 63.3	Ø 75.0	3	27.6
5	Ø 137.5	Ø 76.5	Ø 87.7	3	27.6



Material : NR



Material : NR



Material : NBR

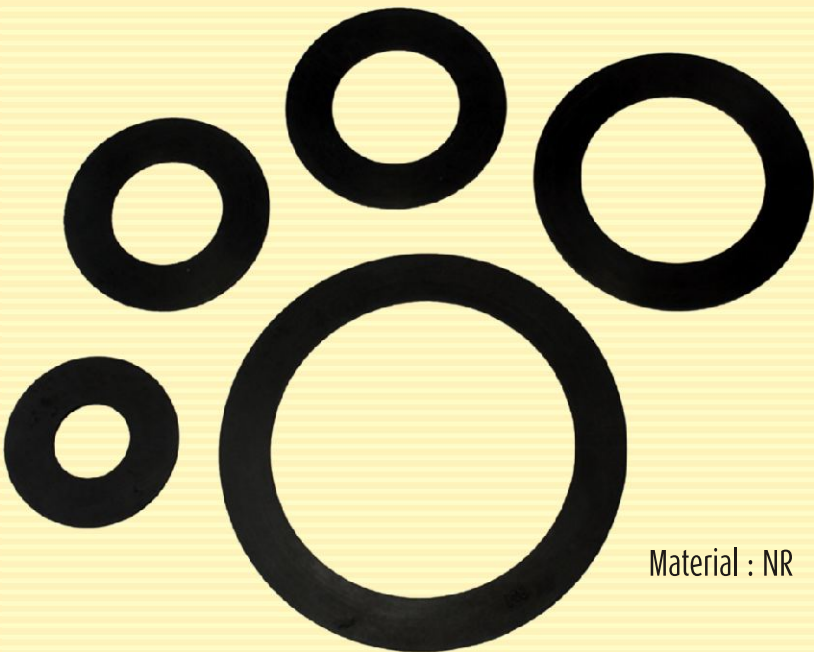
Specifications as per customers requirement

Aluminium Flanges - Gaskets

ALUMINIUM FLANGES

Inner Dia mm	Outer Dia mm	Boss l mm	t mm
27.5	77.5	19.0	0.7-0.8
30.0	80.0		
34.0	84.0		
36.0	86.0		
38.0	88.0		
40.0	90.0		
44.0	94.0		
46.0	96.0		
50.0	100.0		
53.0	103.0		
56.0	106.0		
62.0	112.0		
65.5	115.5		
76.0	126.0		
78.0	128.0		
82.0	132.0		
92.0	142.0		
102.0	152.0		
145.0	195.0		

Material : Al



Material : NR

RUBBER GASKETS

Inner Dia mm	Outer Dia mm	t mm
28.5	78.5	3.2
31.0	81.0	
35.0	85.0	
37.0	87.0	
39.0	89.0	
41.0	91.0	
45.0	95.0	
47.0	97.0	
51.0	101.0	
54.0	104.0	
57.0	107.0	
63.0	113.0	
66.5	116.5	
77.0	127.0	
79.0	129.0	
83.0	133.0	
93.0	143.0	
103.0	153.0	
146.0	196.0	

Window Glass - Window Gasket

Material : PC



Material : NBR



Grommets - Gland with Muffs

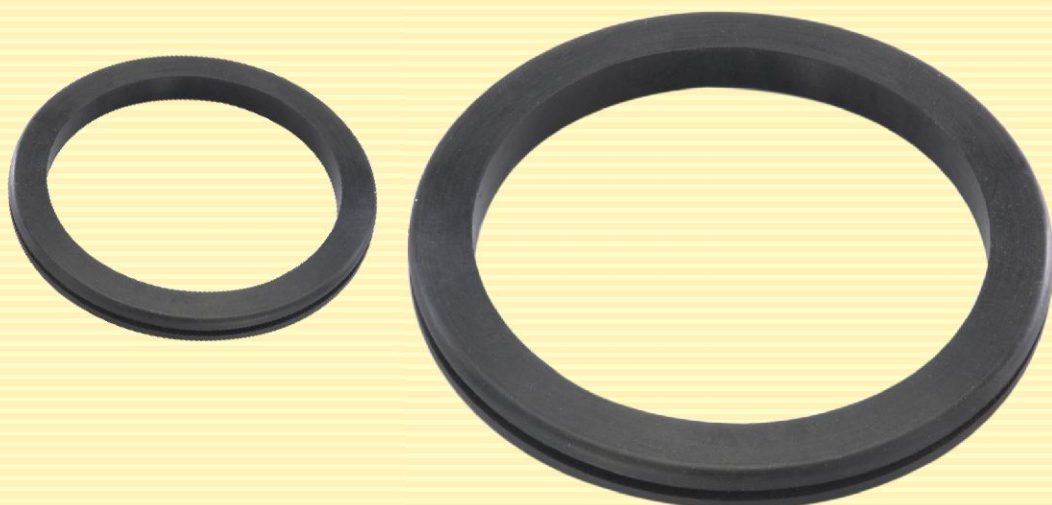
Material : NBR



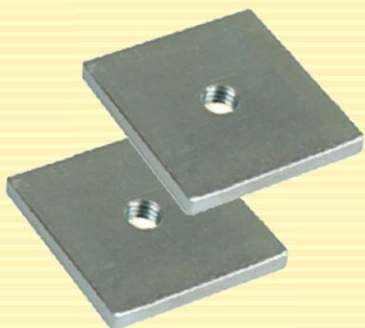
Material : ABS, PVC



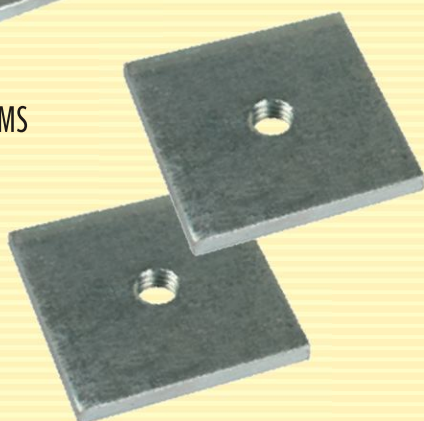
Material : SILICON



Striker Nuts - Motor Stopper - Spindles - Worm Shaft



Material : MS



Material : SS

Material : Al



Material : EN SERIES

Seals



Material : NBR



Material : NBR

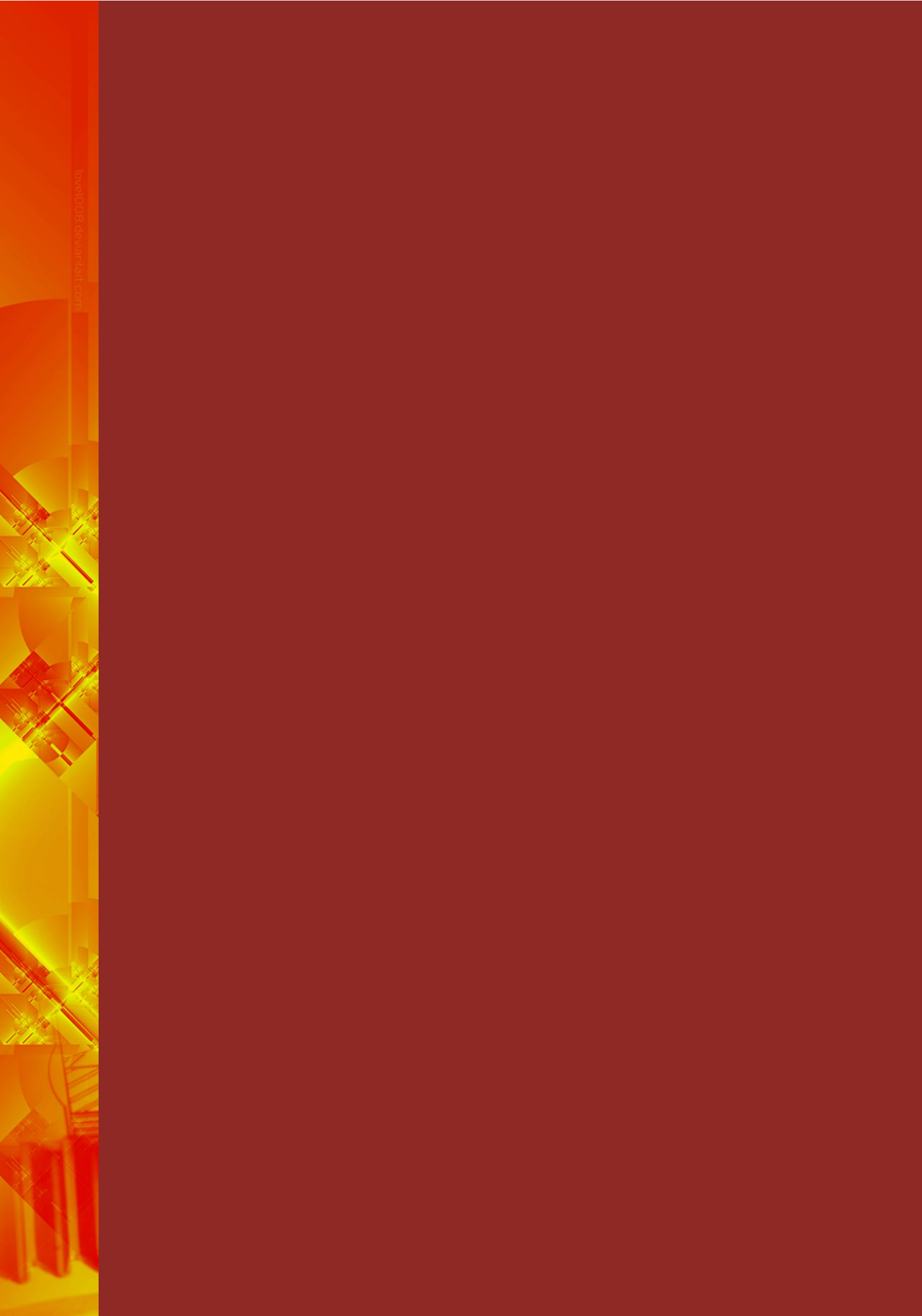


Material : NBR



CNC Turned Components





loveIDB developer.com